

## Chapter

## 2

## Disassembly Procedure

*Please follow the information provided in this section to perform the complete disassembly procedure of the notebook. Be sure to use proper tools described before.*

**A**SUS S6Fm Series Notebook consists of various modules. This chapter describes the procedures for the complete notebook disassembly. In addition, in between procedures, the detailed disassembly procedure of individual modules will be provided for your service needs.

The disassembly procedure consists of the following steps:

- Battery Module
- Memory Module
- ODD Module
- Keyboard
- Top Case Module
- Motherboard
- HDD Module
- CPU FAN Module
- LCD Module

---

BATTERY

---



---

BATTERY  
MODULE  
REMOVAL

---

## Battery Module

*The illustration below shows how to remove the battery module.*

1. Unlock and hold the latch No (1).



2. Slide the battery lock (No.2) and pull the battery pack out.



3. Pull the battery pack out.



---

MEMORY  
MODULE

---

## Memory Module

The S6Fm Series Notebook has 512 RAM onboard. There is one SO-DIMM sockets for installing SO-DIMM RAM. It can upgrade the total memory size up to 1GB.

---

MEMORY  
REMOVAL

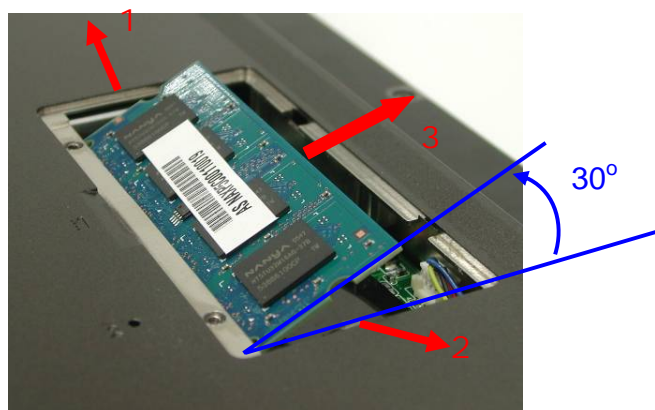
---

### Removing Memory module

1. Remove 2 screws (M2\*3L (K)) and remove the DIMM cover.



2. Open the 2 latches aside (No. 1, 2), which will pop the memory module up to an angle of 30°, then pull out the memory module in that angle (No. 3).



---

OPTICAL  
DRIVE  
DEVICE

---

## ODD Module

*The illustration below shows how to remove the ODD module.*

1. Remove 2 screws (M2\*4L (K)).

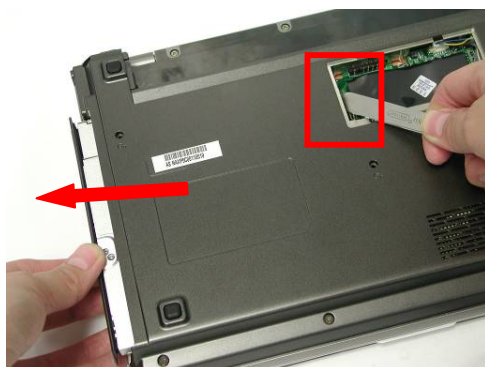


2. Push the ODD Module out by a pair of tweezers.

---

ODD  
REMOVAL

---



---

KEYBOARD

---

## Keyboard

The illustration of below shows how to remove the keyboard.

---

K / B REMOVAL

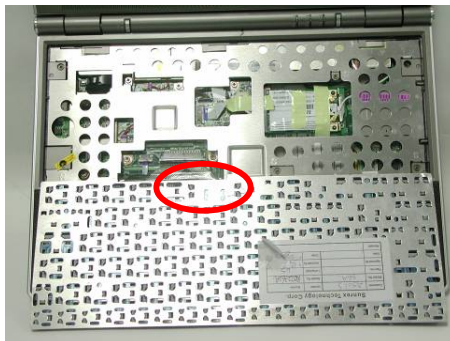
---

### Removing Keyboard

1. Push the 3 latches in (No.1, No.2, No.3) with a pair of tweezers or a single-slotted screwdriver and lift the keyboard plate up.



2. Lay the keyboard down over the Touch Pad module. **\*Do not remove the keyboard yet.** The keyboard cable is still attached.



3. Disconnect the FPC connector by a pair of tweezers.



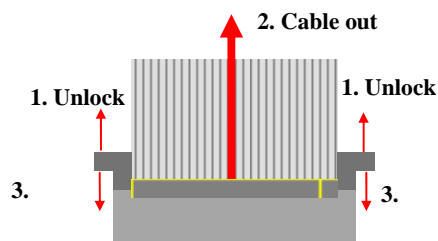
---

C A B L E  
R E M O V A L

---

### Removing Keyboard Cable

1. Use a flexible connector tool to unlock the cable connector on both ends (no. 1).
2. Carefully pull out the keyboard cable (no. 2) with a pair of tweezers.
3. Lock the connector (no. 3) again to avoid possible breakage.



4. Remove keyboard from the top case.

---

T O P C A S E  
M O D U L E

---

### Top Case Module

The illustrations below show how to disassemble and remove the top case module of the notebook. The module contains the top case itself.

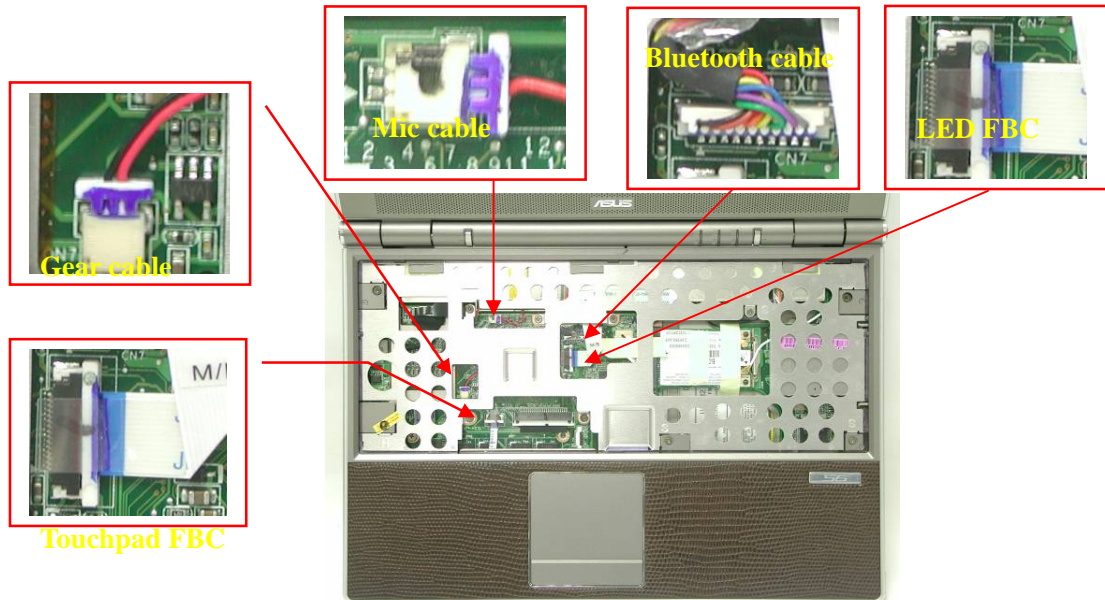
#### Removing top Case Module

1. Remove 10 screws (M2\*8L(K)) on the bottom case.

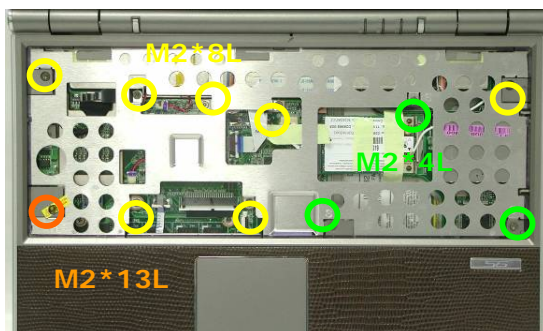




2. Disconnect all cables & FPC on Top case.



3. Remove 7 screws (M2\*8L (K)) & 1 screws (M2\*13L (K)) & 3 screws (M2\*4L (K)) on the bottom case.

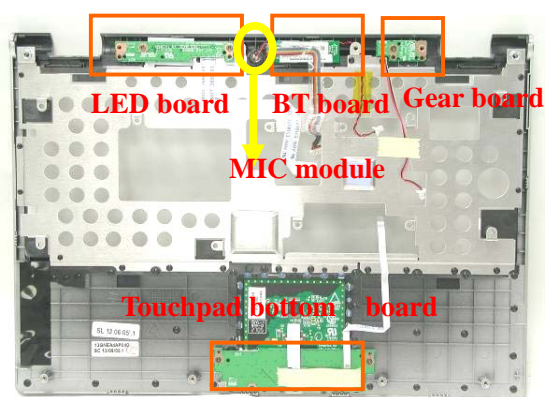


4. Take away the top case from the bottom case.

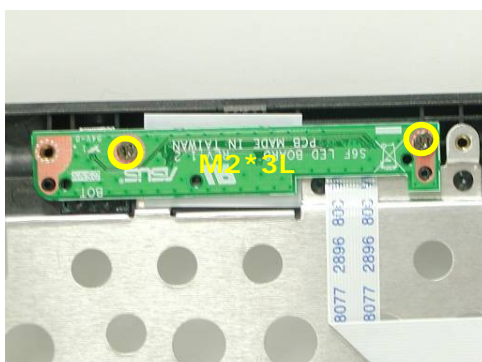


## Top Case Module

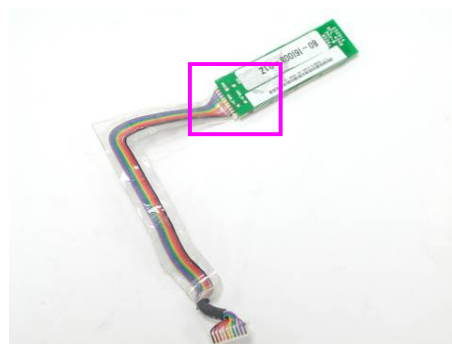
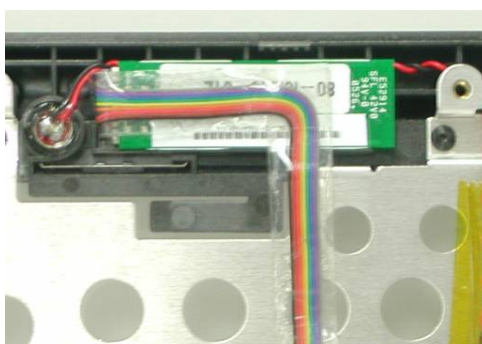
- Take away the LED & Bluetooth & Gear boards & MIC module on the top case.



- Remove 2 screws (M2\*3L(K)) on the LED board and take away the LED board.
- Disconnect the LED FFC.

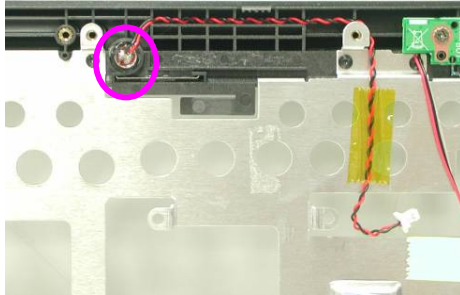


- Take away the Bluetooth board and disconnect the Bluetooth cable.



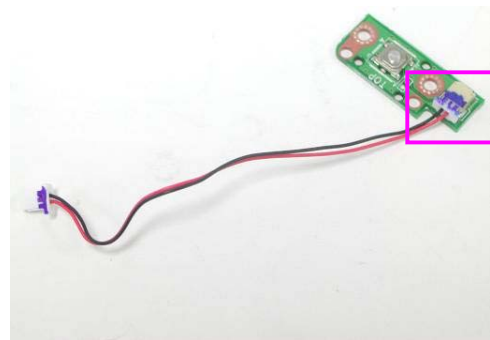
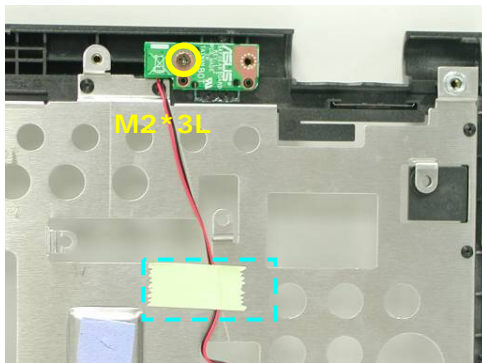


9. Take away the MIC module from the top case.

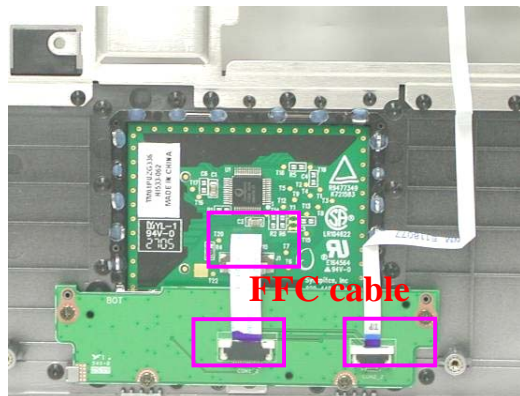
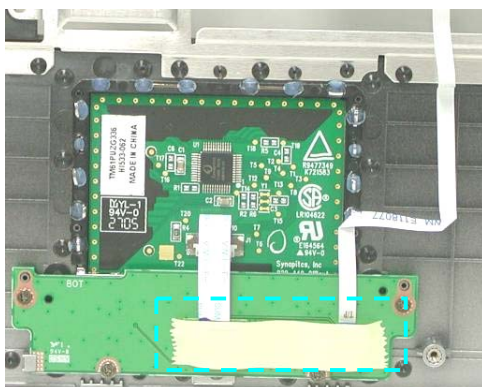


10. Remove 1 piece of tape and 1 screw (M2\*3L(K)) on the Gear board then take away the Gear board from the Top case.

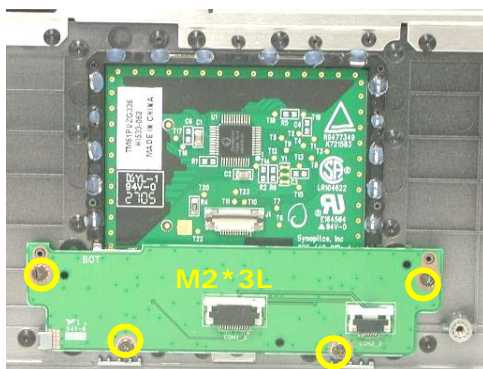
11. Disconnect the Gear board cable.



12. Tear off 1 piece of tape and disconnect 2 FFC on Touchpad bottom board.



13. Remove 4 screws (M2\*3L(K)) and take away the Touchpad bottom board from the Top case.



## WALN Module

The illustrations below show how to remove the WALN module from the notebook.

### Removing WALN Module

1. Tear off 1 piece of tape and disconnect 2 antenna cables.



2. Remove the Wireless LAN module by opening 2 latches aside, and pull it out.



MOTHER  
BOARD

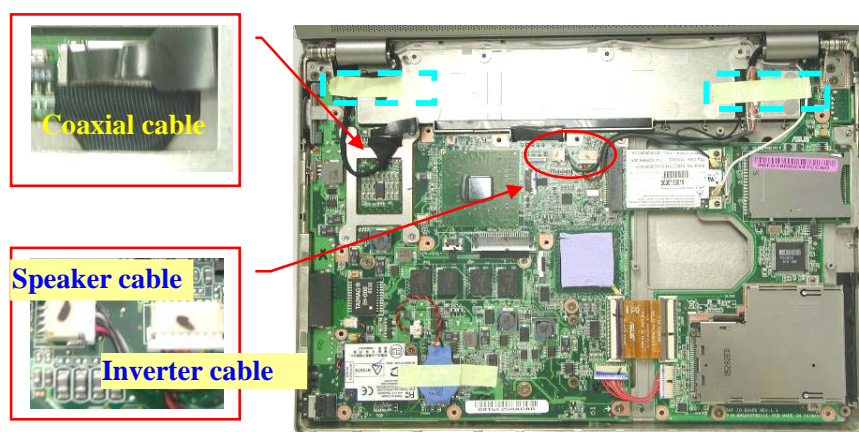
## Motherboard

The illustrations below show how to disassemble and remove the Motherboard.

MOTHERB  
OARD  
REMOVAL

## Removing Motherboard

1. Tear off 2 pieces of tapes.
2. Disconnect coaxial & inverter & speaker cables.



3. Arrange all cables and remove 4 screws (M2\*5L (K)) on both hinge.

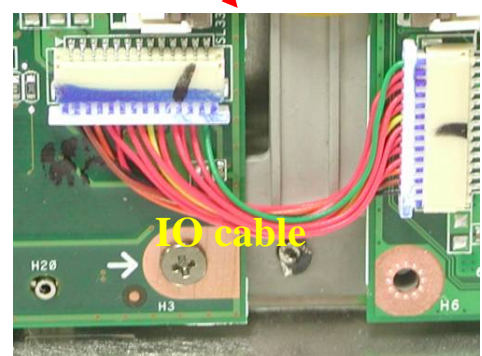
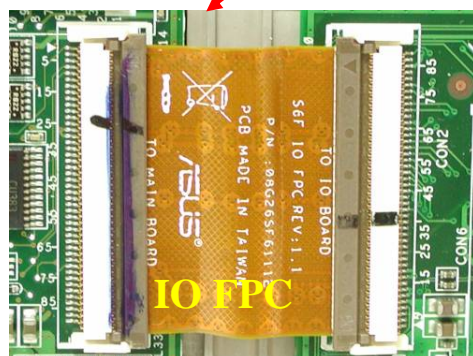
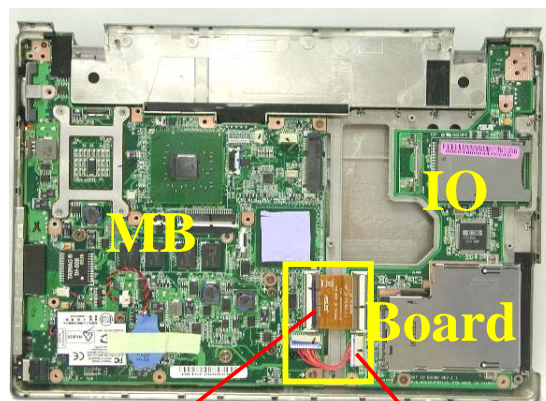




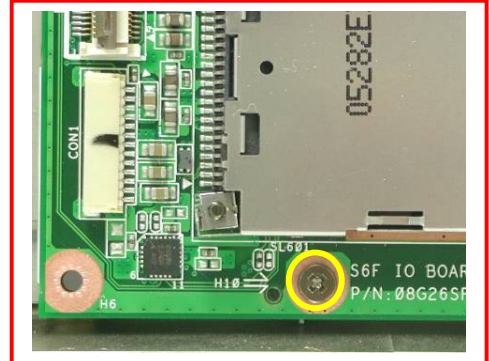
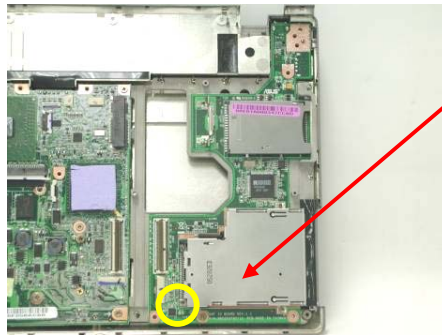
4. Separate the LCD module from bottom case.



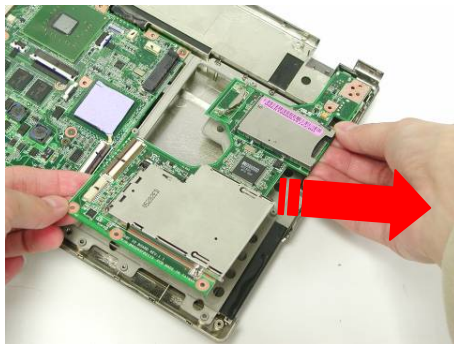
5. Disconnect the IO FPC and cable.



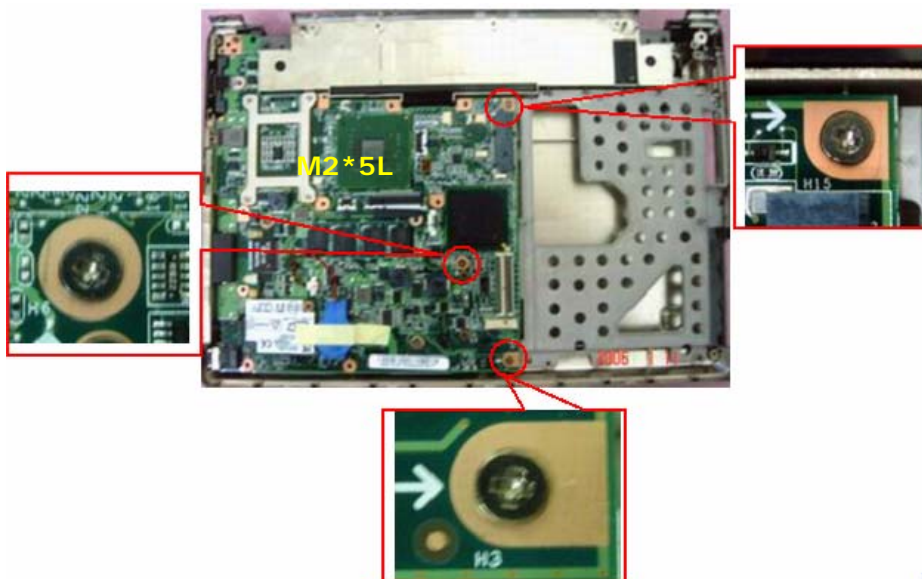
6. Remove 1 screw (M2\*5L (K)) on the IO board.



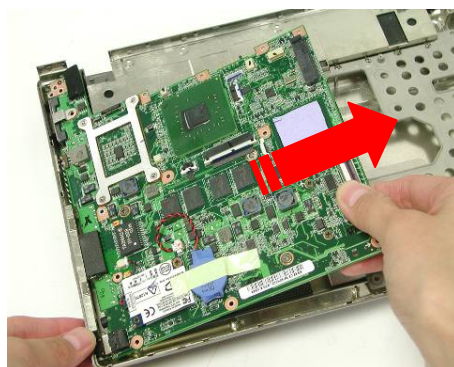
7. Remove the IO board from the bottom case.



8. Remove 3 screws (M2\*5L (K)) on the MB.



- Remove the MB from the bottom case.



## HDD MODULE

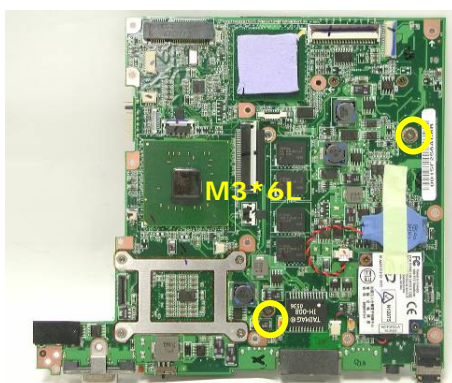
### HDD Module

The illustrations below show how to remove the HDD module from the notebook.

## HDD MODULE REMOVAL

### Removing HDD Module

- Remove 2 screws (M3\*6L (K)) on the MB and turn over the MB.

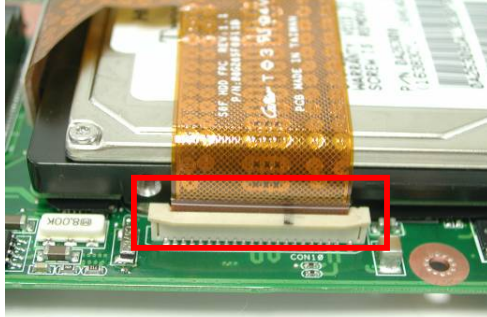


- Tear off 1 piece of tape on the HDD FPC.





3. Disconnect the HDD FPC and take away the HDD module from MB.



4. Disconnect the HDD FPC.



5. Remove 2 screws (M3\*3L (K)) and take away the HDD bracket.



CPU FAN  
MODULE

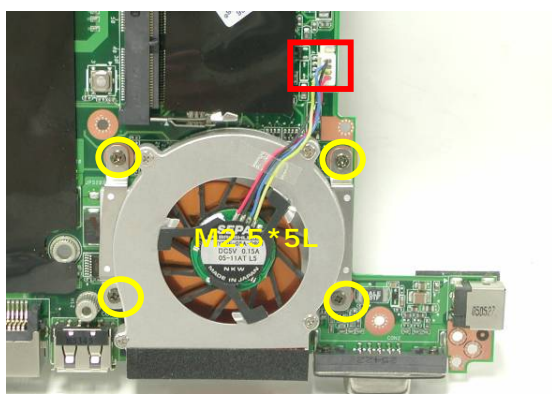
CPU FAN  
REMOVAL

## CPU FAN Module

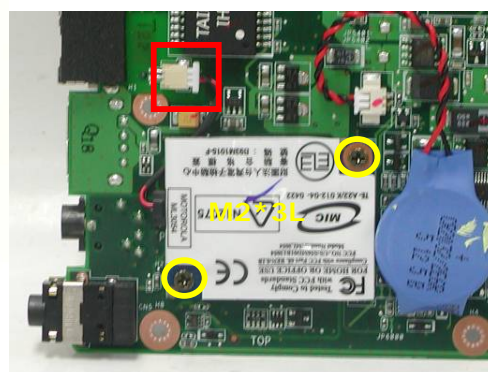
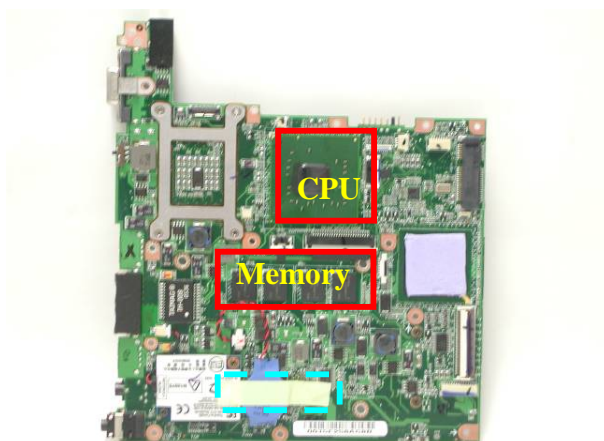
The illustrations below show how to remove the CPU FAN module from the notebook.

## Removing CPU FAN Module

1. Remove 4 screws (M2.5\*5L (K)) and disconnect the CPU Fan cable then remove the FAN module.



2. Tear off 1 piece of tape.
3. Remove 2 screws (M2\*3L (K)) and disconnect the modem cable then remove the modem module.



---

LCD MODULE

---

## LCD Module

The illustrations below show how to remove and disassemble the LCD module. The module contains LCD panel, Inverter board, LCD bezel, LCD back cover.

---

LCD MODULE  
DISASSEMBLY

---

### Disassembling LCD Module

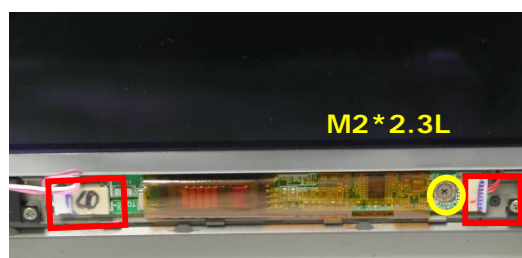
1. Remove 3 rubber pads and 3 screws (M2 x 3L) from LCD module.
2. Prying the inside edges of the LCD bezel, and then separates it from LCD back cover.



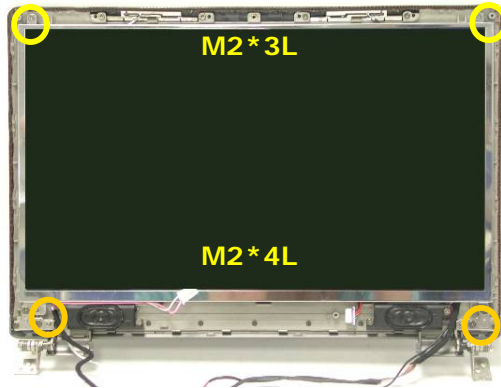
3. Tear off 1 piece of tape.



4. Disconnect 2 cables and remove 1 screw (M2 \*2.3L (K)) then take away the inverter board.



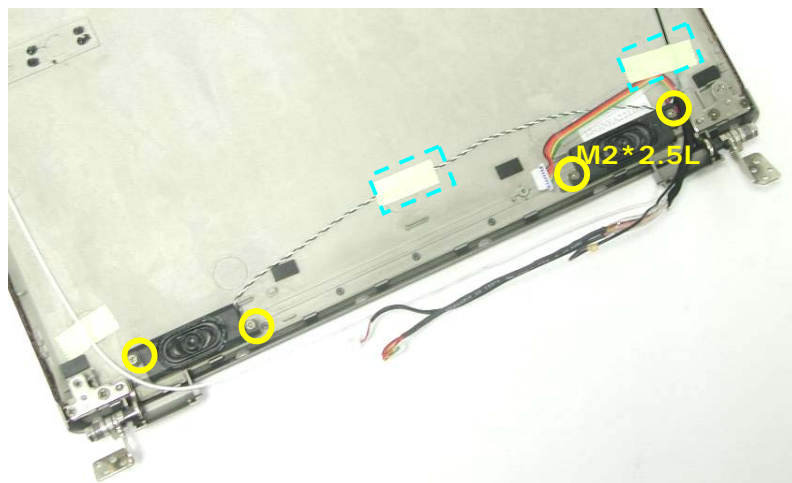
5. Remove 2 screws (M2 \*3L (K)) & 2 screws (M2\*4L (K)) then take away the LCD panel from the LCD back cover.



6. Remove 1 piece of tape and disconnect the coaxial cable.



7. Remove 2 piece of tapes and 4 screws (M2 \*2.5L (K)) on the speaker module then take them away.



8. Remove 4 screws (M2 \*2L (K)) on both hinge and take both hinge away.

